

# Tyrolean Waltz variations Op.8

L. Moretti

**TEMA.**

**VARIAZIONE.1.**

Tyrolean Waltz variations Op.8

VARIAZIONE.2.

*Marcato*

VARIAZIONE.3.

Tyrolean Waltz variations Op.8

*tr* *tr* *tr*

VARIAZIONE.4.

Largo

VARIAZIONE.5.

Tyrolean Waltz variations Op.8

The first two staves of the music. The first staff contains a continuous melodic line with eighth and sixteenth notes. The second staff features a similar melodic line with some rests and a final cadence.

**VARIAZIONE.6.**

The first staff of Variation 6 shows a treble clef with a key signature of three sharps (F#, C#, G#). The melody consists of eighth notes with accents. The bass staff contains a rhythmic accompaniment of eighth notes, with many triplets indicated by a '3' below the notes.

The second staff of Variation 6 continues the melodic and accompanimental patterns from the first staff.

The third staff of Variation 6 continues the melodic and accompanimental patterns from the first staff.

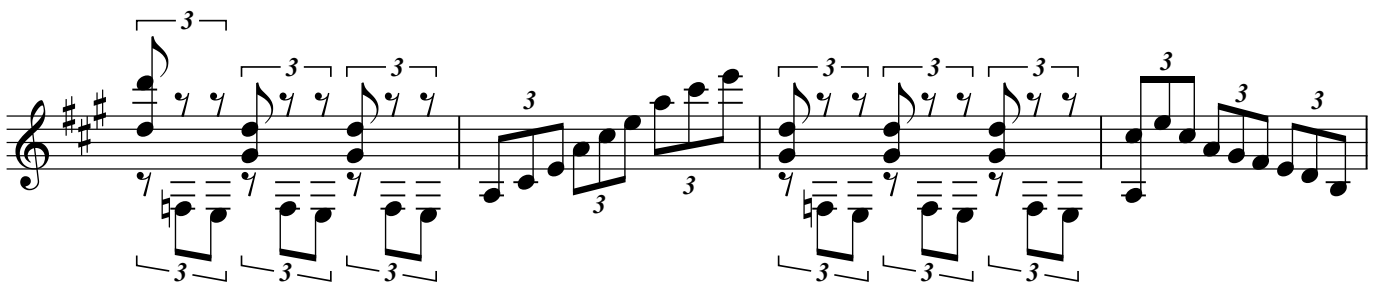
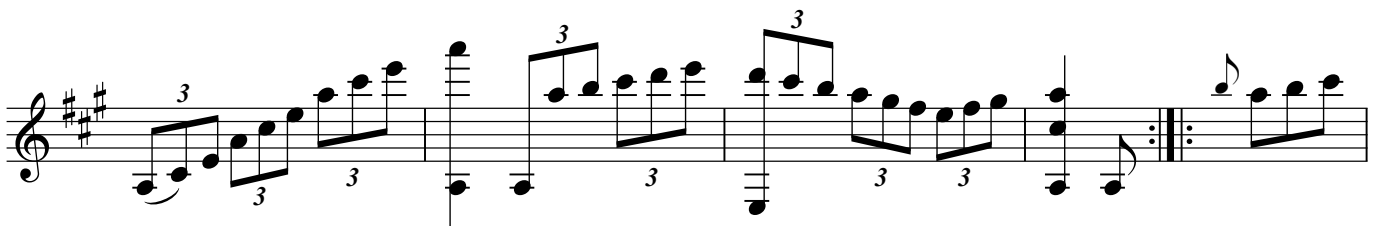
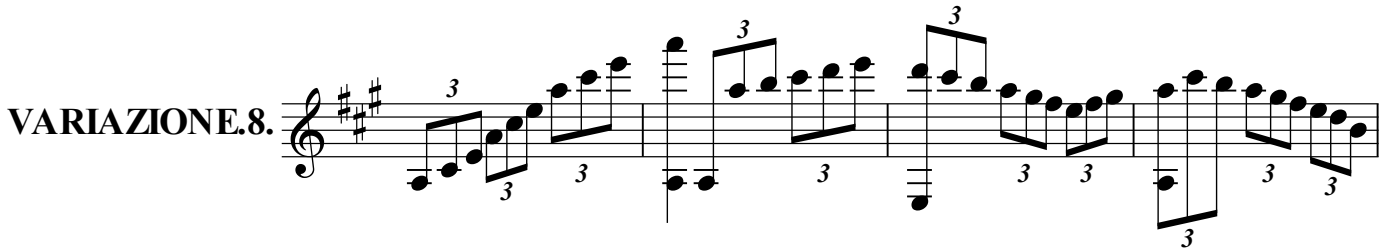
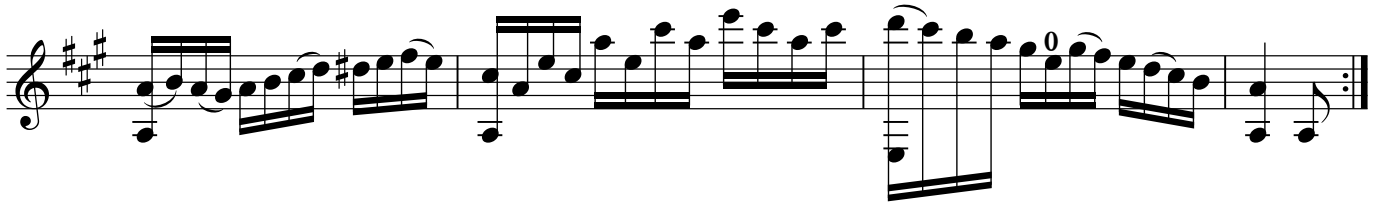
The fourth staff of Variation 6 concludes the variation with a final cadence.

**Primo Tempo .**

**VARIAZIONE.7.**

The first staff of Variation 7 shows a treble clef with a key signature of three sharps. The melody is more complex, featuring sixteenth and thirty-second notes. The bass staff has a rhythmic accompaniment with triplets.

Tyrolean Waltz variations Op.8



Tyrolean Waltz variations Op.8

Coda.

**PIÙ ALLEGRO**